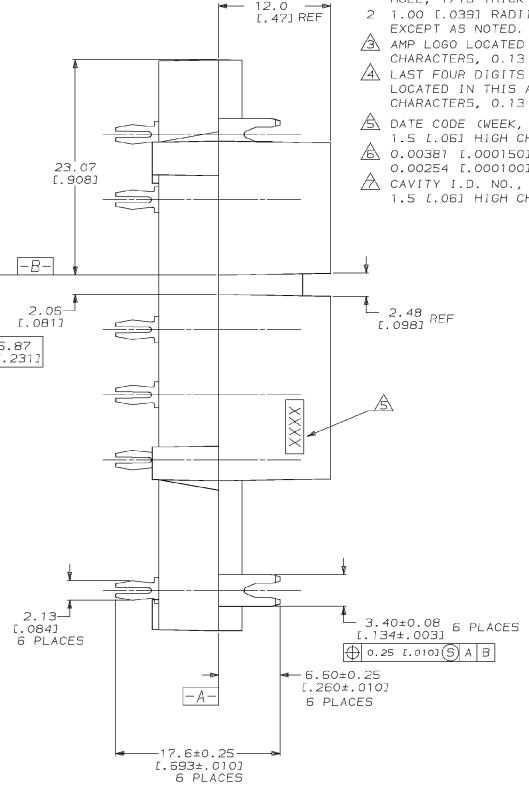
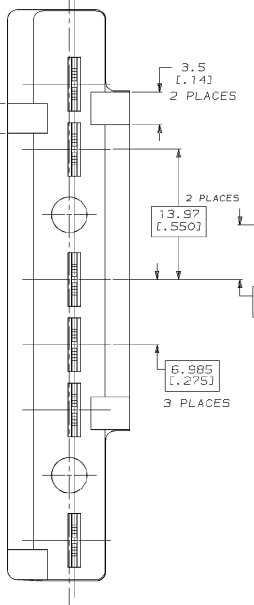
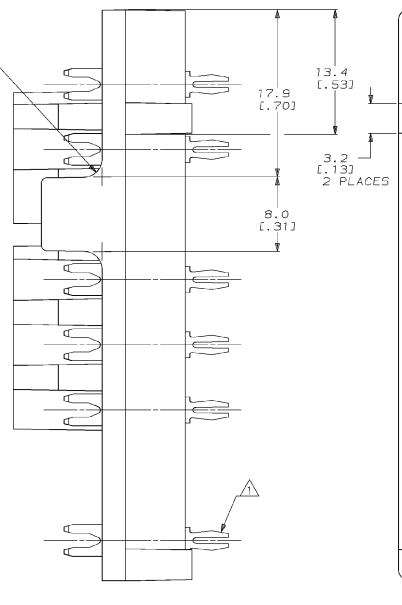
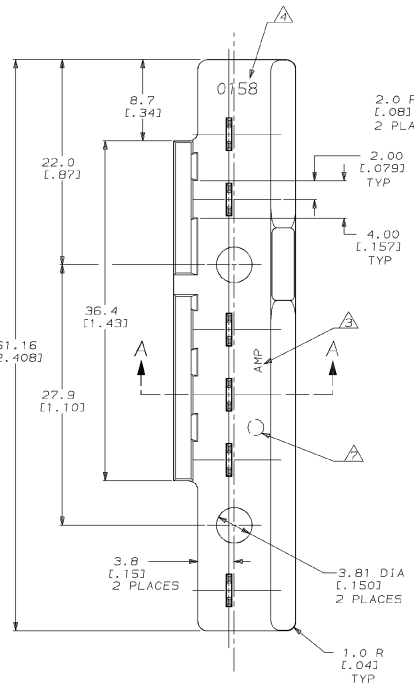
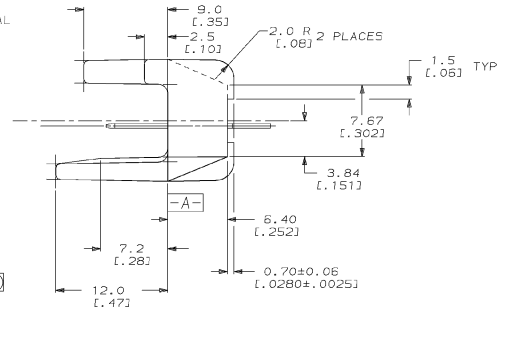
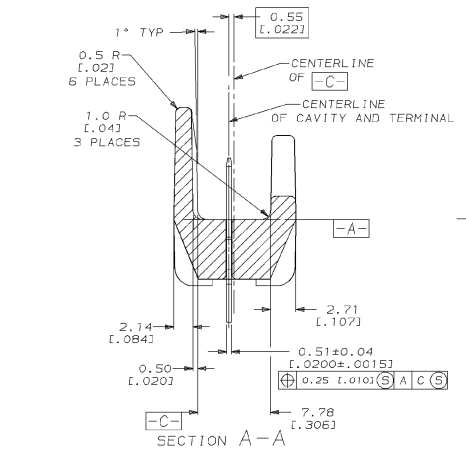


REV	DATE	BY	ZONE	LT	REVISIONS	DATE	APPD
AF	50	P			DESCRIPTION		
		D			REV PER 0710-0500-95		REV PER



- △ POSTS TO FIT INTO 1.78-1.93 [0.070-0.076] DIA HOLE, 1/16 THICK P.C. BOARD.
- 2 1.00 [0.039] RADII, 1° DRAFT PERMISSIBLE EXCEPT AS NOTED.
- △ AMP LOGO LOCATED IN THIS AREA, 1.5 [0.06] HIGH CHARACTERS, 0.13 [0.005] RECESSED.
- △ LAST FOUR DIGITS OF A.C. SPARK NUMBER, LOCATED IN THIS AREA, 2.0 [0.08] HIGH CHARACTERS, 0.13 [0.005] RECESSED.
- △ DATE CODE (WEEK, YEAR) LOCATED IN THIS AREA.
- 1.5 [0.06] HIGH CHARACTERS, 0.13 [0.005] RECESSED.
- △ 0.0038 [0.000150] MIN TIN PER MIL-T-10727 OVER 0.00254 [0.000100] MIN COPPER PER MIL-C-14550.
- △ CAVITY I.D. NO., LOCATED IN THIS AREA.
- 1.5 [0.06] HIGH CHARACTERS, 0.13 [0.005] RECESSED.



**METRIC**

△	H06 BRASS	TERMINAL (2)	521006-1
BLACK	POLYESTER 30X GLASS FILLED 25% MAX REGRIND PERMISSIBLE	HOUSING (1)	
FINISH	MATERIAL	COMPONENT, ITEM NO	PART NO
DO NOT SCALE PRINT. UNLESS SPECIFIED DIMENSIONS IN mm (INCHES)	DR 4/14/92 DIONAEL S. FEHER	<b>AMP</b> AMP Incorporated Harrisburg, PA 17105-3008	
TOLERANCES ON +	CHK 4/16/92 JEFF R. RUTH		
1 121 PLG DEC = 0.25 [0.01]	APPD 4/16/92 KURT RINDOLPH		
2 133 PLG DEC = 0.13 [0.005]	APPD 4/16/92 NELSON E. NEFF		
ANGLES	PRODUCT SPEC	NAME	
SEE TABLE	APPLICATION SPEC	ASSEMBLY, TAB, POKE-IN, MAG-MATE™	
SEE TABLE	FINISH	SIZE	CASE CODE
		Ø	00779
	WEIGHT	SCALE	DRAWING NO
		4:1	521006
			SHEET
			1 OF 1

CUSTOMER DRAWING